

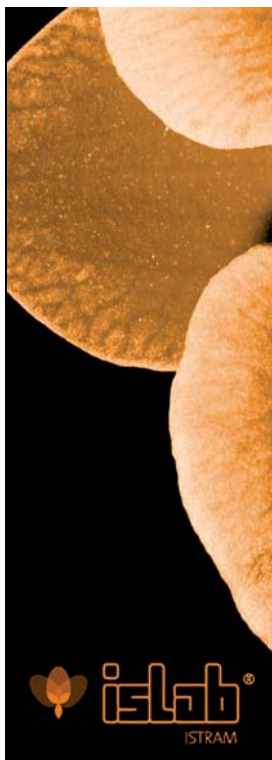
# LAB QUALITY CONTROL MANAGEMENT OF CONSTRUCTION AND CIVIL WORKS



Laboratories for quality control of construction and civil works require a special tool to deal with daily generated information in a fast and efficient way. ISLAB offers you a functionality needed to generate budgets, control plans and daily work schedules. Also it covers other aspects like dealing with the test results, issuing reports and lists, invoicing, etc.

Once that the information has been organised, the laboratory can generate the required reports and send them to the customers, in particular to the Quality Control Department, so that a correct technical decision is reached. Thanks to ISLAB SC application for remote connection, the customers can check the results of testing in real time and decide on the suitable actions.

The laboratory work is simplified as the daily tasks of managing works and tests are highly automated and designed to meet your work requirements. Each laboratory counts on its own methodology and follows the valid regulations for testing materials. Different sections of the application are easily and efficiently updated if a prescription or procedure is changed at one point.



## Features and specifications

### MULTIUSER SOFTWARE / SECURE AND OPTIMISED DATA STORAGE



ISLAB is a multi-user application that allows you to work simultaneously on a network without interference with other users.

The finished works are transferred to a secondary database to perform laboratory enquiries.

- Concurrency control
- Various access levels for the users
- MySQL database
- ISLAB security copies
- Security copy retrieval
- Data compression in a database

### INFORMATION PROCESSING AND MANAGEMENT

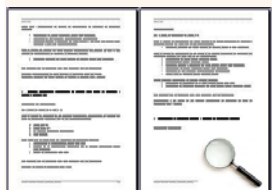
10484	1033	1574504	05-444	Ciudad de Buenos Aires	11.987.114 €
10484	10304	2145504	05-14024	Navarra Industrial Parque El Girasol	0,00 €
10429	10279	054504	05-1600	Provincia Municipal	2.274.204 €
10428	10284	054504	05-453	Centro de Salud Amargosa	490.004 €
10427	206	1487104	04-1632	Club - Juv. 1990	379.004 €
10426	103	1445104	05-1630	Club de 20. San José	2.202.004 €
10424	10306	054504	04-1606	Club 12. Amargosa, C. Constitución	5.002.004 €
10422	103	0541103	05-1700	Batallas de Lengua nº 27	3.272.004 €
10421	10307	0541103	05-1462	Navarra Sancho - Calatayud	374.004 €
10420	10	0541103	05-1462	Navarra - 60 viviendas	0,00 €
10424	10306	0541103	05-2223	Navarra Industrial Polígono zona para 3	0,00 €
10418	1027	1145602	03-1100	Provincia Córdoba - Ciudad Santa	706.004 €
10414	103	1145602	02-002	Batallas de 8. Amargosa A. de. Argentina	0,00 €
10409	103	0541103	05-1634	Provincia Caliente-Rosario	360.75 €

The application enables you to store neatly the laboratory information: offers, works, companies, professionals, operators, types of testing, etc.

Automatic generation of offer codes, works and customer codes, so that the user can configure the format and adapt it to the laboratory requirements.

- Homogeneous information treatment
- Inserting, modifying and erasing elements
- Information search filters
- Sorting of configured information
- Fast work generation according to the offer

### GENERATING BUDGETS AND CONTROL PLANS FOR AN OFFER



ISLAB allows you to generate entire budgets and control plans due to the previously inserted works data.

The users can configure the fixed texts of sections in a control plan to the shape they prefer.

- Control plan preview
- Budget preview
- Direct output to Excel
- Configured format of a control plan
- Modifying prices in a budget
- Budget discounts

### CONCRETE SECTION



Due to its importance in works and the specific treatment it requires daily, concrete cracking testing deserves a section apart.

ISLAB enables you to perform a complete follow-up of the material, starting from its collection at the work site to writing test reports and releasing results.

- Distributing concrete samples
- Concrete samples to be collected
- Concrete samples to be tested
- Inserting results of concrete cracks
- Follow-up of concrete samples
- Complete reports of crack results

### OPTIMUM MANAGEMENT OF SAMPLES AND RELATED WORK ORDERS

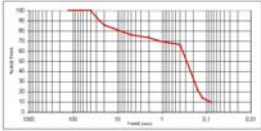
ORDEN DE TRABAJO		1040004 - 1	
Numero de Albarán	1030	Orden	CONSTRUCCIONES C.A.S. (CONSTRUCCIONES CIVILES)
Código obra	05-14024	obra	Navarra Industrial Parque El Girasol
Red. Inicial	27/06/04	Materia	Concreto
Material	10, 200, 21		
Fecha emisión	05/07/04		
ENSAYOS A REALIZAR:			
CANTIDAD	ENSAYO	UNIDAD	
1	Controlar con "tu" por métodos de ensayo	unidades	1000
1	Analizar de su estado mediante ensayo de ensayo	unidades	1000

The daily laboratory tasks include issuing work orders for testing concrete samples.

Each order consists of a work sheet per test, which simplifies the operator's work, prevents committing errors and optimises planning.

- Work order preview
- Sample identifying label
- Sample condition in the laboratory
- Follow-up of sample tests
- Information integrity

## GENERATING FINAL TEST REPORTS / USE OF TEMPLATES



The generation of test reports is based on simple Excel sheets that are easily adapted to the usual work style in a laboratory. You can make use of your own file formats or use the templates provided by ISLAB, both configured according to your requests.

- Configured laboratory reports
- Digitally signed reports
- Blocking the users after digital signing
- Printing reports for various recipients
- Remote display of reports

## CONFIGURATION AND PERSONALISATION OF LISTS AND REPORTS / INFORMATION ANALYSIS

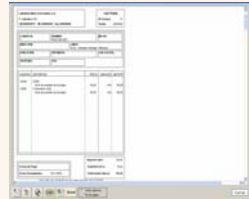


The user can generate lists with the laboratory information stored in the database: companies, professionals, works, tests, etc.

The new lists are stored frequently and the data required for each list is configured.

- Multiple lists for different areas
- Configured list fields
- Free file format definition in a list
- List output to Excel
- Efficient data analysis and management

## IMMEDIATE INVOICING OF THE PERFORMED TESTS / EFFICIENT ECONOMICAL MANAGEMENT

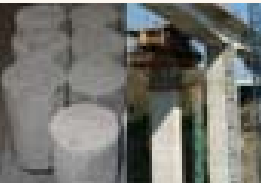


ISLAB allows you to issue rapidly invoices for the performed tests of an ongoing work.

A subsequent follow-up of each invoice and optimum performance of financial operations are enabled.

- Pre-view of invoicing concepts
- Generating monthly invoicing
- Invoicing lists and reports
- Printing invoices for a specified period

## COMPATIBILITY WITH ISCEO / QUALITY CONTROL OF CIVIL WORKS



The communication between the two applications allows direct transferring of test results from the laboratory to the work site.

However, it is required to send previously the scheme of works elements to the laboratory in order to relate them with the tests performed.

- Simple results transmission to the work site
- Work elements input
- Test results output
- XML file formats

## REMOTE ACCESS TO ISLAB / ISLAB SC



ISLAB allows our laboratory customers to access remotely to the testing data of concrete resistance from their offices.

The access to the information is established over the Internet. The laboratory issues necessary permission to transfer the concrete data from a particular work.

- Installation of a simple supplement
- Test follow-up
- Results enquiry
- Displaying concrete reports
- Printing reports



[www.istram.net](http://www.istram.net)

World class solutions for infrastructural projects

### MAIN OFFICE BUHODRA INGENIERIA

PARQUE TECNOLOGICO DE ASTURIAS  
33428 LLANERA ASTURIAS ESPAÑA  
TEL : +34 902 930 690  
FAX : +34 985 27 01 50  
asturias@istram.net

### NATIONAL OFFICES

madrid@istram.net (+34) 902 930 690  
barcelona@istram.net (+34) 902 930 690  
sevilla@istram.net (+34) 902 930 690

### INTERNATIONAL OFFICES

PORTUGAL lisboa@istram.net  
POLAND warszawa@istram.net  
ROMANIA bucharest@istram.net